

# Attack Path Management

## The Unified Hybrid Cloud Security Platform

See all the ways they'll attack.  
**See all the ways to stop them.**

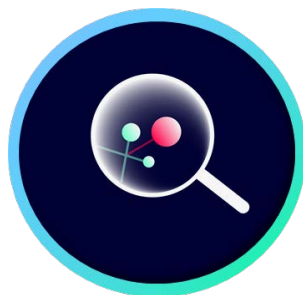
Breaches, advanced persistent threats, ransomware and common hacks, routinely exploit well known attack paths in enterprise networks. Identifying, understanding and disrupting these attack paths before attackers can exploit them is critical to efficiently reduce the risk to the business and improve security posture.

XM Cyber is changing the way organizations approach cyber risk. Now you can continuously see your hybrid network through the eyes of an attacker and spot attacks before they happen. You'll reduce your internal attack surface by uncovering hidden attack paths to your critical assets across cloud and on-prem networks. Cut them off at key junctures. And eradicate risk with a fraction of the effort.



### No Blind Spots

Get a single, comprehensive view of all critical attack paths across your entire hybrid network.



### No Guesswork

Use analytics and modelling to know which attack paths a real-life attacker would actually take, then you can pinpoint where best to disrupt the attack path with step-by-step remediation guidance.

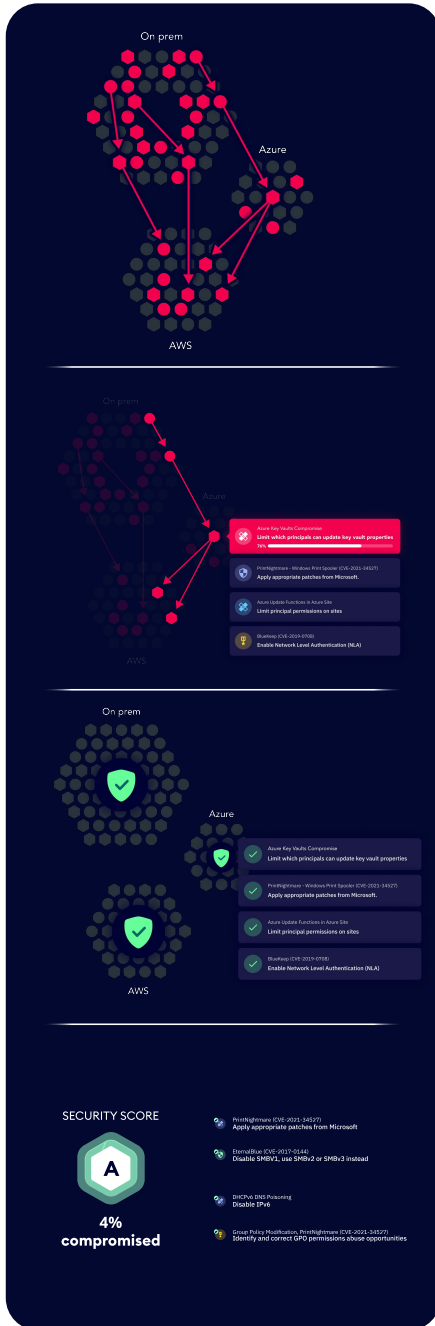


### No Stopping

Conduct automated, continuous risk reduction that's safe, scalable and simple to deploy regardless of your dynamic environment.

# See the attack before it happens.

With the Attack Path Management platform, you can see the attacker's perspective of your hybrid-cloud network with a full attack graph of your exposures and gain visibility into your security posture to proactively close security gaps. Pinpoint and prioritize attack paths and quickly remediate exploitable vulnerabilities, credentials, misconfigurations, user activities, and other IT security hygiene issues that attackers could otherwise leverage to compromise critical assets.



## Contextualize

Always keep an eye on the paths to your critical assets

- Manage attack paths across your on-prem, AWS, Azure or GCP environments
- Get graph-based modelling built from data collection and analysis of what could potentially be exploited
- Detect lateral movement opportunities
- Get an automated platform for prioritizing and eliminating risk

## Prioritize

Fix the most damaging attack paths first

- Take a proactive approach by looking at all risks and prioritizing them by the impact they pose to your critical assets
- Always run up-to-date modeled scenarios against the newest threats aligned with MITRE attack techniques
- Know what to fix to disrupt the most damaging attack paths first

## Resolve

When you eradicate key risks at the right point, the rest will go away

- Cut off attack paths at key junctures (a.k.a choke points)
- Save analyst time with detailed remediation steps
- Close the loop, harden your environment and reduce the attack surface

## Improve

Continuous improvement of security posture on a 24/7/365 basis across your hybrid network

- Scale your risk management with a platform designed to run safely and smoothly
- Apply best practices and optimization tips whenever you need help
- Quickly and continuously eradicate risks with automated remediation planning that's embedded into your operation
- Help drive business decisions and see that your security investments are paying off

## Why XM Cyber?



**Continuous** risk visibility



**Safe** automated monitoring of entire network



**Comprehensive** attack modelling from any breach point to critical assets



**Proactive** security to rapidly prioritize and respond to risk



**Hybrid** coverage across on-prem and multi-cloud in a single view

[xmcyber.com](https://xmcyber.com)

Tel-Aviv +972-3-978-6668 | New York +1-866-598-6170 | London +44-203-322-3031 | Munich +49-163-6288041 | Paris +33-1-70-61-32-76